

Anti-ALPPL2 mIgG2a antibody(SGN-ALPV)

Product information

GM-58773AB-10	10 µg
GM-58773AB-100	100 µg
GM-58773AB-1000	1 mg

Antibody information

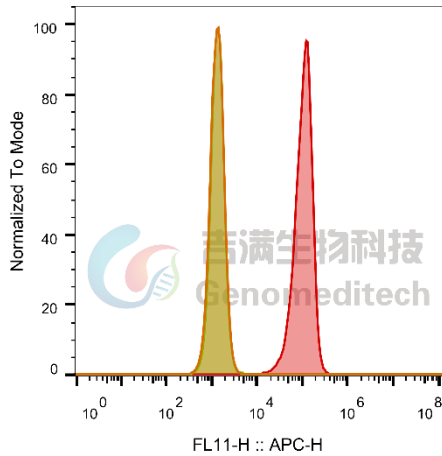
Species Reactivity	Human; Cynomolgus
Clone	SGN-ALPV
Source/Isotype	Monoclonal Mouse IgG2a, κ
Application	Flow cytometry;ELISA
Specificity	Detects ALPPL2(ALPG); ALPP.
Gene	ALPPL2; ALPP
Other Names	ALPPL, ALPPL2, GCAP ALP, ALPI, IAP, PALP, PLAP, PLAP-1
Gene ID	ALPPL2: 251(human) ALPP: 250(human)、102133045(Cynomolgus)
Background	Alkaline phosphatase, placental type also known as placental alkaline phosphatase (PLAP) is an allosteric enzyme that in humans is encoded by the ALPP gene. PLAP is a tumor marker, especially in seminoma and ovarian cancer. There are at least four distinct but related alkaline phosphatases: intestinal (ALPI), placental (this enzyme), placental-like (ALPPL2), and liver/bone/kidney (ALPL) (tissue-nonspecific). The first three are located together on chromosome 2, whereas the tissue-nonspecific form is located on chromosome 1. The coding sequence for this form of alkaline phosphatase is unique in that the 3' untranslated region contains multiple copies of an Alu family repeat. Alkaline phosphatase, placental type is a membrane-bound glycosylated dimeric enzyme, also referred to as the heat-stable form, that is expressed primarily in the placenta, although it is closely related to the intestinal form of the enzyme as well as to the placental-like form.
Storage	Store at 2-8°C short term (1-2 weeks).Store at ≤ -20°C long term. Avoid repeated freeze-thaw.
Formulation	Phosphate-buffered solution, pH 7.2.
Endotoxin	< 1 EU/mg, determined by LAL gel clotting assay

Version:3.2 Revision Date:03/25/2024

Data Examples

Flow cytometry

H_ALPPL2(ALPG) CHO-K1 Cell Line (Catalog # GM-C26398) was stained with Anti-ALPPL2 mlgG2a antibody(SGN-ALPV) (Catalog # GM-58773AB) or isotype control antibody, followed by anti-Human IgG APC-conjugated Secondary Antibody.

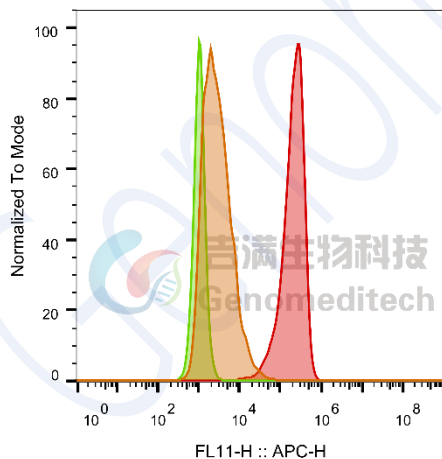


SampleID	Geometric Mean : FL11-H
CHO-K1 Anti-ALPPL2+APC-2nd Ab	1339
CHO-K1 H_ALPPL2 M_IgG+APC-2nd Ab	1374
CHO-K1 H_ALPPL2 Anti-ALPPL2+APC-2nd Ab	101888

Fig. FACS

Flow cytometry

Cynomolgus_ALPP HEK-293 Cell Line (Catalog # GM-C26410) was stained with Anti-ALPPL2 mlgG2a antibody(SGN-ALPV) (Catalog # GM-58773AB) or isotype control antibody, followed by anti-Human IgG APC-conjugated Secondary Antibody.



SampleID	Geometric Mean : FL11-H
HEK-293 anti-ALPPL2+APC-2nd	2874
HEK-293 Cyno_ALPP M_IgG+APC-2nd	1060
HEK-293 Cyno_ALPP anti-ALPPL2+APC-2nd	196621

Fig. FACS

Indirect ELISA

Human ALPPL2 Protein; His Tag (Catalog # GM-84414RP) was immobilized at 1 µg/ml (100 µL/well). Increasing concentrations of Anti-ALPPL2 mlgG2a antibody(SGN-ALPV) (Catalog # GM-58773AB) were added.

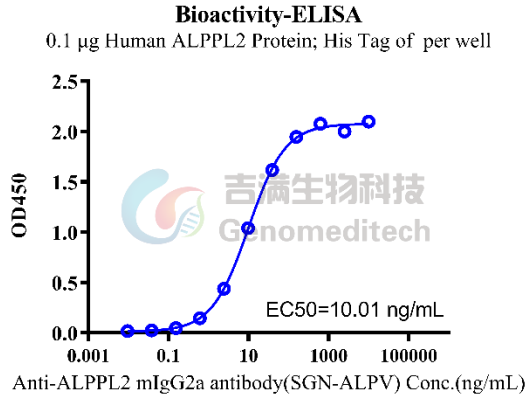


Fig . ELISA

Indirect ELISA

Biotinylated Human ALPP Protein; His-Avi Tag (Catalog # GM-85159RP) was immobilized at 1 μ g/ml (100 μ L/well) on streptavidin precoated. Increasing concentrations of Anti-ALPPL2 mIgG2a antibody (SGN-ALPV) (Catalog # GM-58773AB) were added.

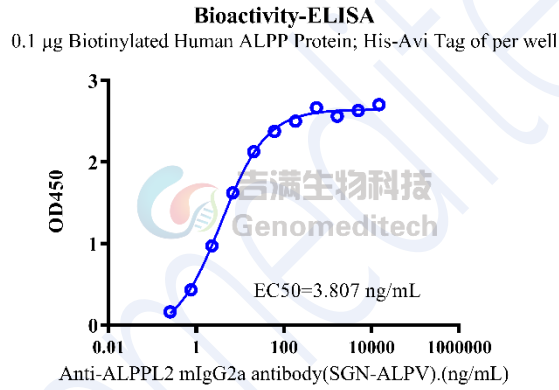


Fig . ELISA